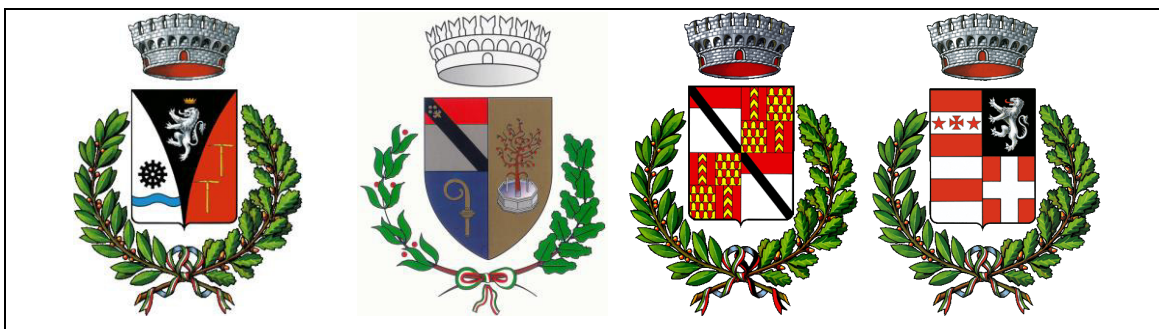


REGIONE AUTONOMA VALLE D'AOSTA
REGION AUTONOME VALLEE D'AOSTE



COMUNI DI
CHAMPDEPRAZ – ISSOGNE – VERRRES – ARNAD

Committente: Amministrazione comunale di CHAMPDEPRAZ

**POTENZIAMENTO DELLA RETE IDRICA DI CHAMPDEPRAZ AI
FINI DEL COLLEGAMENTO CON L'ACQUEDOTTO COMUNALE
DI ARNAD ED ISSOGNE**

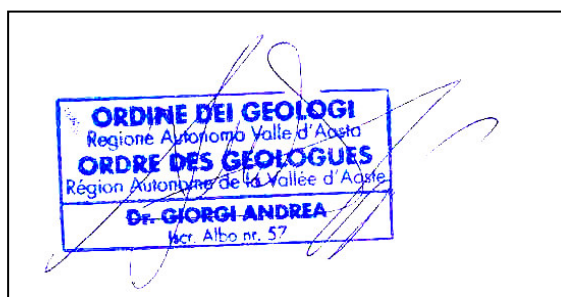
STUDIO DI IMPATTO AMBIENTALE

TAV. 8.3 - CARTA DEI VINCOLI ART. 35 LR 11/1998

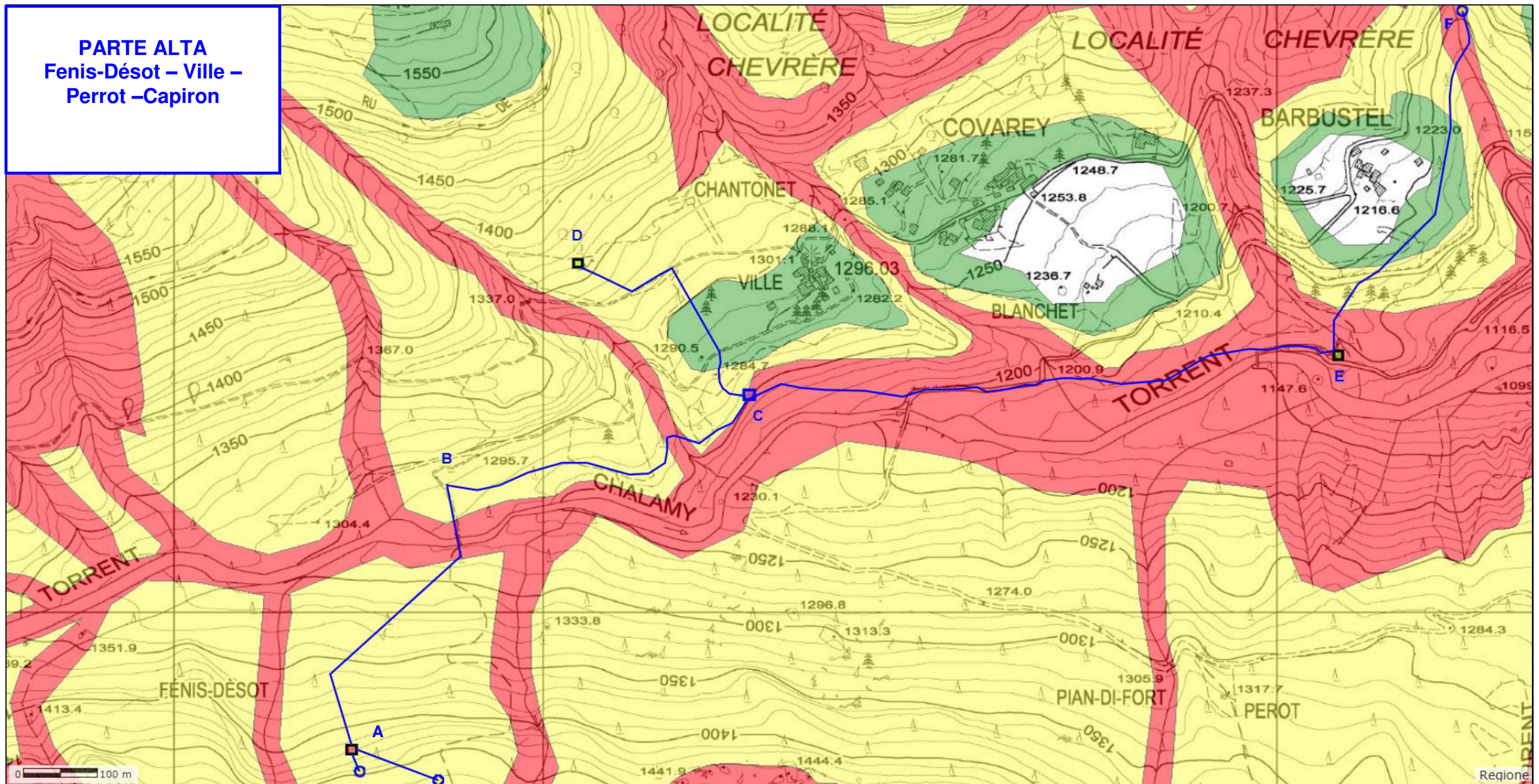
TECNICI INCARICATI:

GEOL. ANDREA GIORGI

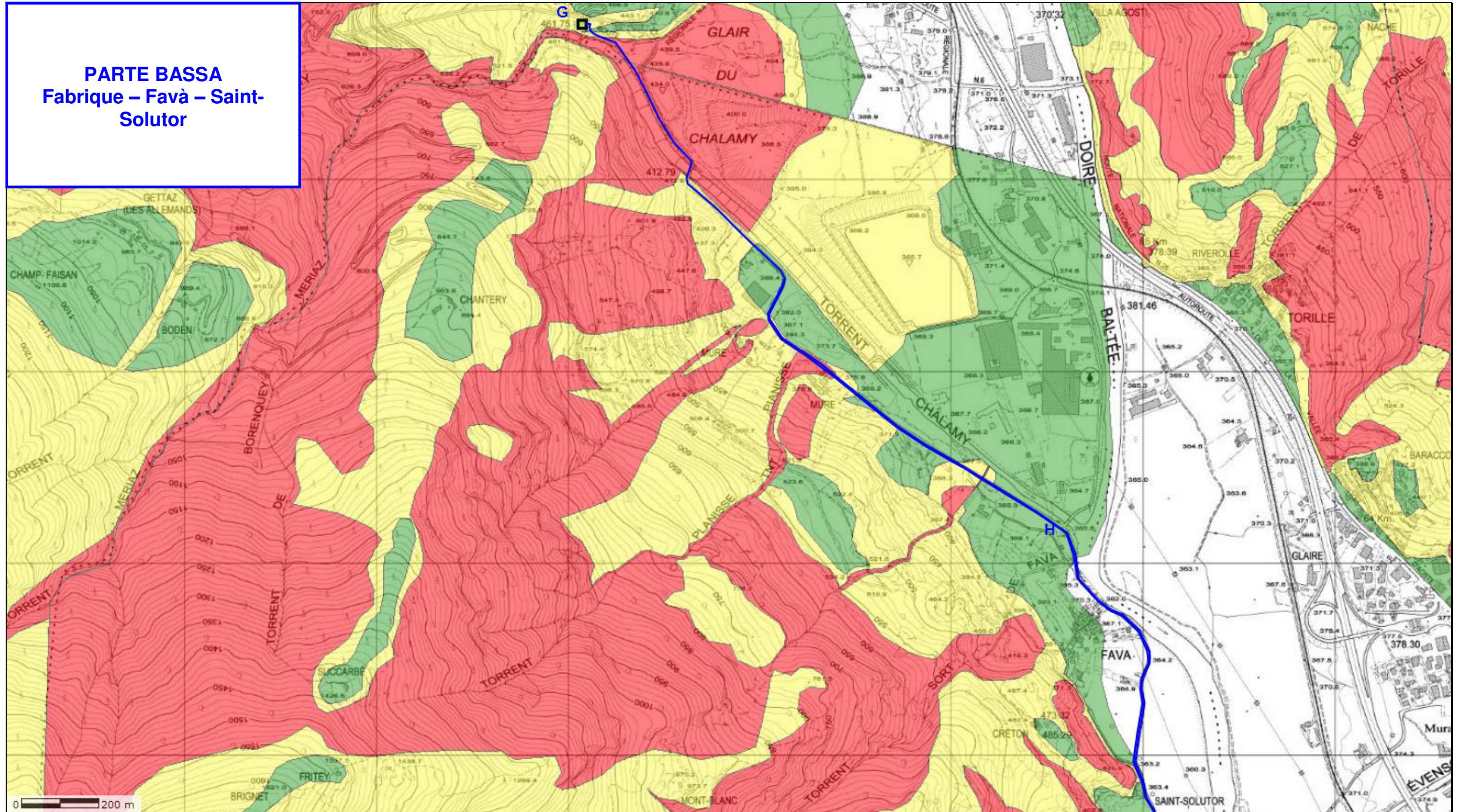
FOR. LUCA PEZZUOLO



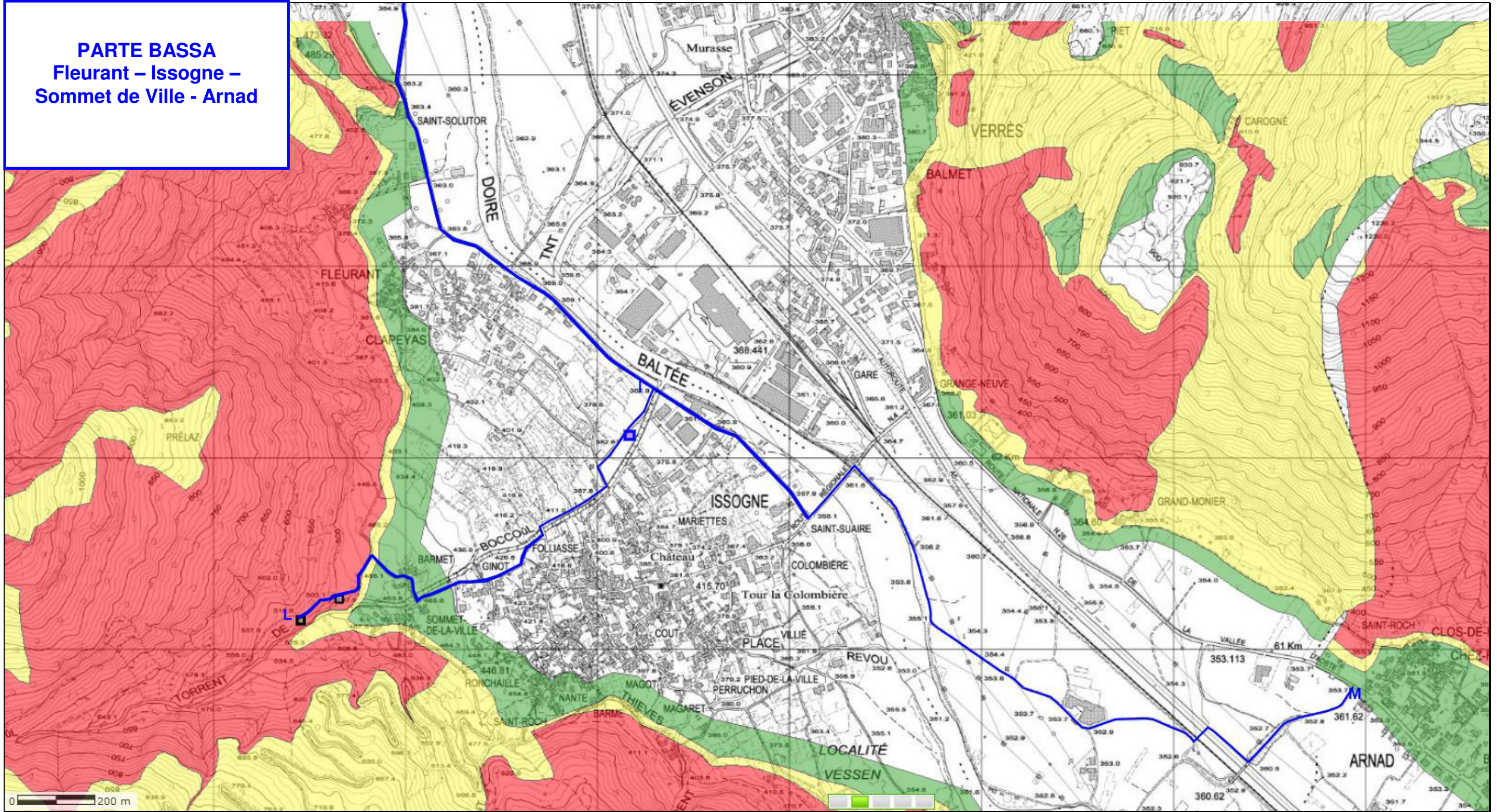
PARTE ALTA
Fenis-Désot – Ville –
Perrot –Capiron



PARTE BASSA
Fabrique – Favà – Saint-Solutor











PARTE BASSA
Fleurant – Issogne –
Sommet de Ville - Arnad



LEGENDA

Ambiti

Art.35/1 - Frane

-  F1 - Area dissestata di grande pericolosità
-  F2 - Area dissestata di media pericolosità
-  F3 - Area dissestata di bassa pericolosità
-  FC-1 - Fascia di cautela con disciplina d'uso F1
-  FC-2 - Fascia di cautela con disciplina d'uso F2
-  FC-S - Fascia di cautela speciale
-  NA- Cartografia non approvata
-  NI- Cartografia non informatizzata



Tubazioni in progetto



Opera di presa sorgenti



Vasca di carico



Vasca di accumulo di testata



Vasca di accumulo esistente



Camera di manovra